

And let us not grow weary of doing good, for in due season we will reap, if we do not give up. So then, as we have opportunity, let us do good to everyone, and especially to those who are of the household of faith.

—Galatians 6:9–10

Dear Friends,

As the passage from Galatians directs, Lyngblomsten has not grown weary of doing good!

Prom Afternoon

Lyngblomsten's annual Homes for the Aging Week in mid-May, themed "Spirit Week" and celebrated at both campuses, offered a variety of activities for residents centered around high school memories. On the afternoon of prom at the Como Park campus, severe weather hit. Enacting safety protocols, residents, staff, volunteers, and local high school students—all in their prom attire—huddled together away from windows, talking, dancing, laughing, and making new memories.

Grounds for Joy

What could be more beautiful than a Minnesota autumn afternoon outdoors, celebrating the renovated courtyard on the Como Park campus? Alas, heavy rain rolled in, threatening to dampen the day's festivities. Donors, board directors, volunteers, staff, and guests squeezed under tents, shared umbrellas, and laughed together before continuing the celebration inside with residents who, wisely, were keeping out of the rain.

Laughter Fills the Room

At the annual employee holiday gathering, staff sat together, sharing stories and memories while making new connections. Asked, "What do you like best about working here?" out came stories and examples with common themes: "We're like family ... We really like helping the residents ... We want them to be happy."

Making a Difference

As Lyngblomsten marks the 120th anniversary of the founding women's dream—providing a Christian home for the elderly—we recognize that our daily work to carry out our mission is *hand to hand and heart to heart*.

This past year has been successful in the common metrics applied to organizations, like financial stability and employee retention, and there have been campus improvements at Como Park and continued growth at Lino Lakes. Most importantly, our staff and volunteers truly embody our mission, providing compassionate care, innovative services, and vibrant community connections that enhance the quality of life for older adults. Those efforts are supported by donors, sponsors, and member congregations. And in that, we all are making a difference.

Sincerely and in Christ,

Michael Lovett, PhD
Board Chair

Jeffrey Heinecke
President & CEO

Highlights from 2025

Residential Services



Residents of The Heritage at Lyngblomsten collect reference photos for their paintings in a weekly Art with Heart class.

- The Lyngblomsten Care Center pursued several initiatives aimed at improving the resident experience, including updating the resident handbook, switching to a new pharmacy, and expanding Spiritual Care's door farewell service for deceased residents to include non-Christian ritual options. In addition, more residents were able to participate in the Art with You program (organized by Lifelong Learning & the Arts) as it expanded from one teaching artist to include volunteer instructors.
- The Lyngblomsten Apartments had a number of physical improvements to the building, including upgraded electrical boxes and tuckpointing repairs on exterior bricks. Residents initiated the creation of the Almond Oasis, a coffee bar in their dining room that has provided a space for socialization, including resident-led activities. In addition, the Apartments added a number of service enhancements for residents. These included hosting a monthly meeting to gather input on communal meals, bringing a mobile market with fresh produce, and adding a bus service with stops in nearby Roseville.
- The Heritage at Lyngblomsten replaced its washers and dryers, repainted several hallways, and upgraded internet access. Upgrades were also made to the building's exterior, most notably the patio, which was replaced as part of the courtyard renovation. New awnings and landscaping rounded out the work, along with the addition of decorative garden towers featuring resident-made ceramic artwork. A process improvement was implementing Lyngblomsten's new pharmacy service.
- Lyngblomsten at Lino Lakes made a number of operational enhancements: a Montessori-based system was implemented for memory care activities to stimulate various parts of residents' brains, culinary services were outsourced, and Lyngblomsten's new pharmacy service was implemented. Offerings expanded to include overnight respite. Planning for Phase II campus expansion continued, including exploring options either for the addition of a skilled nursing facility or the buildout of the adjacent lot—designated for retail and senior living—at the corner of Hodgson Road and County Road J.

Community Services



In early 2025, Community Services began offering three sessions of The Gathering each week at Lyngblomsten's Lino Lakes and Como Park campuses.

- At the beginning of 2025, Lyngblomsten Community Services streamlined its staffing to home in on its memory care support specialization. This effort aligned resources with the growing need for caregiver support as well as a sustainable financial model for delivering services.
- The Gathering, Lyngblomsten's group respite program for older adults with early-to mid-stage memory loss, served 64 participants and their family caregivers in 2025—ten more participants than the previous year. This increase was due in part to more sessions being offered each week: six in 2025 as compared to four in 2024. Lyngblomsten's Como Park and Lino Lakes campuses each began hosting three sessions per week, and for the first time, participants were able to attend multiple sessions each week, a change that was made in response to caregiver feedback.
- A total of 240 informal family caregivers received support from Community Services staff, with 30% of them receiving two or more services. In an effort to serve more family caregivers in Lino Lakes and the surrounding area, Community Services began having office hours one day a week at Lyngblomsten at Lino Lakes during which coaching, education, and other resources were available.

Supporters



Volunteers logged more than 19,000 hours of service in 2025, brightening the days of Lyngblomsten residents and participants through conversations, card games, and countless other activities.

- The roster of registered volunteers for Lyngblomsten numbered 595 at the end of the year. Volunteers provided 19,348 hours of service for residents and community participants at Lyngblomsten's two campuses.
- Volunteer Services awarded its first youth scholarship since 2019, giving \$1,000 to Garrett Burns, who started playing the piano at Lyngblomsten at Lino Lakes in 2023. The Anna Quale Fergstad Award for Distinguished Service was awarded to David Christianson, a former Lyngblomsten board director, in recognition of his generous gifts of time and treasure to Lyngblomsten and the broader community. Additionally, the award was given posthumously to Karina Allen, a longtime supporter who passed away in 2023 and was the last Life Member of Lyngblomsten.
- The Lyngblomsten Foundation raised just over \$1 million, 36 percent of which came from bequests during the year. In conjunction with the Lights of Lyngblomsten year-end appeal, the Foundation held a tree-lighting celebration at each campus, rekindling a beloved tradition that had been paused for about a decade.

Other

- In partnership with a pharmacy management group and two other Christian senior care organizations in the Twin Cities, Lyngblomsten launched Trinity Pharmacy. This pharmacy serves residents exclusively from the three senior care organizations, improving coordination, increasing operational efficiencies, and enhancing the resident experience.
- The central courtyard on Lyngblomsten's Como Park campus was renovated in the summer thanks to gifts from the *Grounds for Joy!* fundraising campaign and a bequest from longtime supporter Jim Nash, for whom (along with his mother, Del) the courtyard is now named. New features include a pavilion for concerts and events, a grilling station, a dedicated space for lawn games, an engraved paver garden featuring messages from donors, and new flower gardens and trees.
- Lyngblomsten's Lifelong Learning & the Arts continued to enhance the lives of older adults through a variety of programs and activities, with volunteers being trained to allow for the expansion of the Art for You program, which brings art to the rooms of residents who prefer not to participate in group activities. The Lyngblomsten Foundation Annual Gala in September raised funds for Lifelong Learning & the Arts, which had more than 2,600 individual participations through its events and classes in 2025.

When the founding women of Lyngblomsten were naming the beloved organization they were building, they chose to honor their home country of Norway and its national flower, the lyng. Growing in harsh conditions on the mountainsides, the lyng flower reminded the women of the difficult task ahead of them and inspired them to persevere. Today, the lyng flower still serves as a symbol of perseverance as we are passionately encircled in the same mission 120 years later.

- Employee retention continued to be a strong achievement, ending the year with 96% retention for all Lyngblomsten entities combined.
- As technology continues to play a larger role in the delivery of care and services, a staff workgroup began exploring AI (artificial intelligence) technologies for Lyngblomsten.



Lyngblomsten wrapped up a pilot program in 2025 that tested how interacting with a robot improved residents' mental health and socialization.

People Served

January–December 2025

378 persons
Lyngblomsten
Community Services

597 persons
Lyngblomsten Care Center

119 persons
Lyngblomsten Apartments

78 persons
The Heritage at Lyngblomsten

240 persons
Lyngblomsten at Lino Lakes

Employees

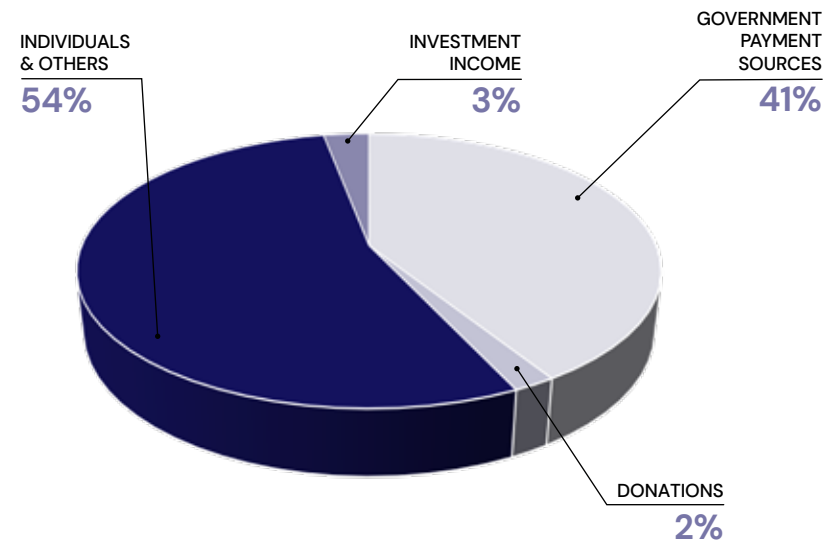
498
Employees
(as of December 31, 2025)

96%
Retention Rate
(as of December 31, 2025)

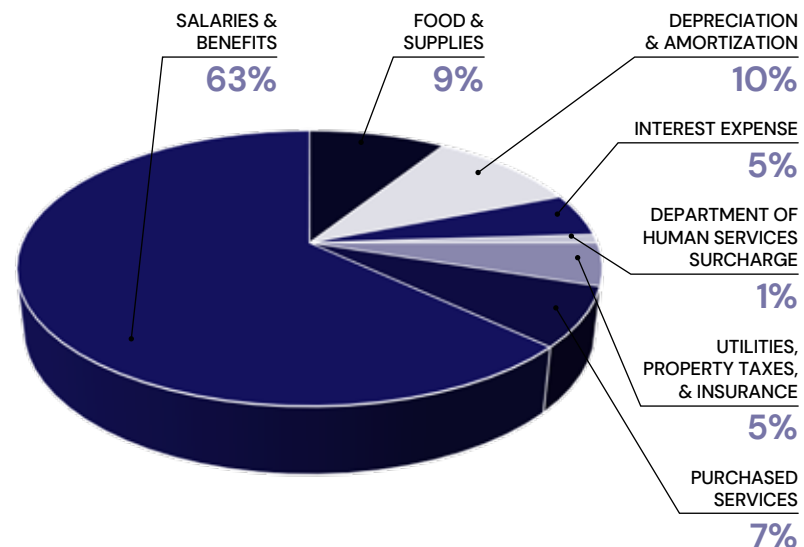
Financials

January–December 2025

Revenues



Expenses



Volunteer Statistics

January–December 2025

19,348
Hours
Volunteered

595
Registered
Volunteers

Fundraising Statistics

January–December 2025

\$1,001,379
Contributed

608
Donors

1,204
Gifts

Includes donor households, churches, and grantors

19
Corporate
Sponsors

Memberships

Heritage Society
26 Households

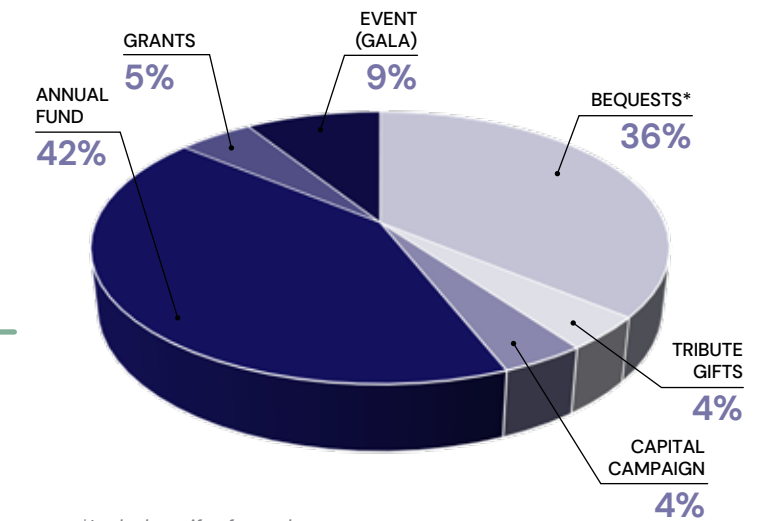
Persons who have chosen to help ensure the future capacity of Lyngblomsten by providing financial support through a charitable gift annuity, naming Lyngblomsten in their will or life insurance beneficiary, or establishing an endowment of \$10,000 or more.

President's Club
84 Households

Annual membership granted to donors giving \$1,000 or more during the calendar year.

Lyngblomsten Foundation Sources of Donations

January–December 2025

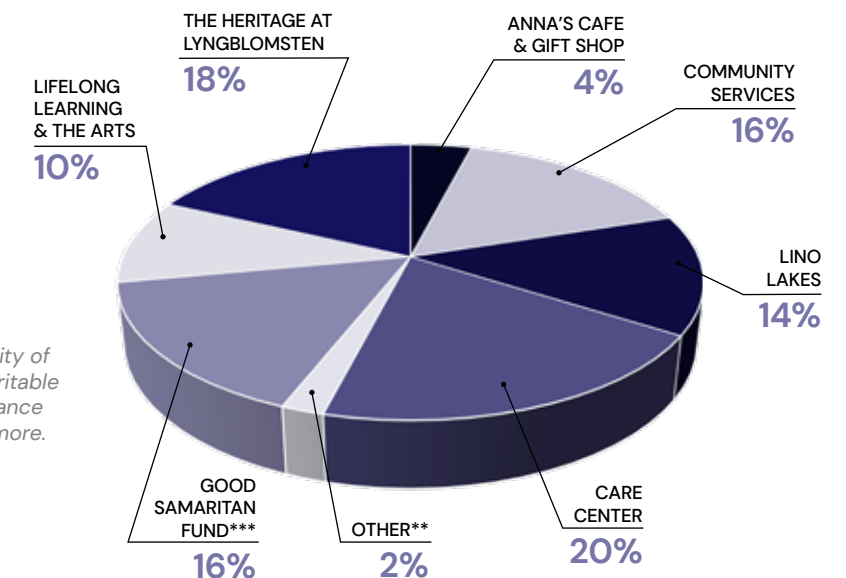


**Includes gifts from three estates.*

Lyngblomsten Foundation Distribution to Programs

January–December 2025

\$2,631,706
Dollars Distributed



***Lyngblomsten Apartments, Spiritual Care, and annuity interest*

****Includes major subsidies to Home Health Services*

Our Guiding Principles

For our **participants**, Lyngblomsten promotes dignity through informed choices for living options, respecting individuality, and orchestrating the best life possible.

For our participants' **families**, Lyngblomsten supports their needs through careful listening, traveling alongside them as they walk the journey with their loved ones.

For our **employees**, Lyngblomsten strives to foster an environment that encourages compassionate caregiving, innovative thinking, problem-solving, and opportunity seeking.

Through our **community** of donors, volunteers, corporate congregations, and socially responsible corporations, Lyngblomsten encourages the individual to live one's personal ministry by enhancing the lives of older adults.

Our Mission

Influenced by Christ, Lyngblomsten provides a ministry of compassionate care and innovative services to older adults in order to preserve and enhance their quality of life.

Our Pillars

Influenced by Christ

Innovation & Leadership

Resources & Support

Person-Centered &
Dignity-Enhancing Experiences

Engaged Lifestyle

Member Congregations

The year indicates when the church became a member.

Amazing Grace Lutheran
Inver Grove Heights, 2007

Augustana Lutheran
West St. Paul, 2002

**Bethlehem Lutheran
in the Midway**
St. Paul, 1962

**Centennial United
Methodist**
Roseville, 2000

Christ on Capitol Hill
St. Paul, 1961

**Community of
Grace Lutheran**
White Bear Lake, 1998

Como Park Lutheran
St. Paul, 1960

**Falcon Heights
United Church of Christ**
Falcon Heights, 1999

Gloria Dei Lutheran
St. Paul, 1985

**Gustavus Adolphus
Lutheran**
St. Paul, 1988

Holy Childhood Catholic
St. Paul, 1991

Immanuel Lutheran
St. Paul, 1960

Incarnation Lutheran
Shoreview, 1990

Jehovah Lutheran
St. Paul, 1995

Lakeview Lutheran
St. Paul, 1960

Living Waters Lutheran
Lino Lakes, 2022

North Heights Lutheran
Roseville/Arden Hills, 1975

Prince of Peace Lutheran
Roseville, 1961

Redeemer Lutheran
White Bear Lake, 1960

Roseville Lutheran
Roseville, 1975

St. Anthony Park Lutheran
St. Paul, 1960

St. Timothy Lutheran
St. Paul, 1961

Salem Lutheran
West St. Paul, 1965

Board of Directors

2025–2026

Dr. Michael Lovett, *Chair*
Diana Rockstad, *Vice Chair*
Dr. Mark Knudson, *Treasurer*
Justin Bryant, *Secretary*
Jeff Heinecke, *President & CEO*

Dr. Joan Brandt
Debra George
Dr. Mary Hauck
Chuck Heidbrink
Amy Korzenowski

Rev. Dr. Joy McDonald Coltvet
Bruce Olsen
John Peck
Peter Polga
Ross Tollefson



Corporate Office

1415 Almond Avenue, St. Paul, MN 55108
(651) 646-2941 www.Lyngblomsten.org