



# Blueprint *for* Mission



CORPORATE ANNUAL SUMMARY

For the year ended December 31, 2022

# BLUEPRINT *for* MISSION

**You are... members of His household, built on the foundation of the apostles and prophets, with Christ Jesus Himself as the cornerstone. In Him, you too are being built together to become a dwelling in which God lives by His spirit.** –Ephesians 2:19-20, 22

Dear Friends of Lyngblomsten,

*Blueprint for Mission* is an apt descriptor for that which guided our work in 2022.

A vision was set several years ago to transform a vacant property with a few rundown buildings in Lino Lakes into a vibrant senior living community. Paused by the pandemic, work on a second campus for Lyngblomsten resumed in late 2021, and in 2022 the vision came into full view as the blueprints for our second campus transformed from plans on paper to buildings on the verge of completion.

Serving more older adults through balancing and expanding our residential services will soon be reality. As you might imagine, an expansion of this size and significance has been no small feat. Supply chain issues created a few unforeseen challenges and delays. Nevertheless, we remain on track for opening in the summer of 2023.

The year also brought the sale of one of Lyngblomsten's latest innovations, eMenuChoice. The Lyngblomsten Board of Directors decided after nearly a decade of ownership and continuous expansion, the time was right to sell our point-of-sale dietary software. The sale strengthened our financial capacity, and jettisoning the operations is allowing staff to focus greater attention on the opening of our new campus.

At our Como Park campus, significant strides were made in rebuilding operations to pre-pandemic normalcy. Though COVID-19 is not entirely a thing of the past, most of our operations are as they were prior to the pandemic. Each of the residential settings showed slight to significant improvement in occupancy, staffing, and/or financial performance.

Our community services bolstered its support to those living at home with memory loss and their caregivers through the addition of a new program called Memory Collective. Evidence-based wellness classes equipped others for living safely and confidently at home.

As we look to 2023, the Lyngblomsten Board of Directors will begin the work of identifying strategic priorities to serve as our blueprint for the next several years. The opening of a second campus will mark the last major milestone in our most recent set of strategies.

The accomplishments in 2022 were made possible by the continued support of our residents, volunteers, families, and donors; the prayerful support of our delegates and member congregations; and the hard work of our staff. We thank all of you for the contributions you've made to Lyngblomsten and to those we serve.

Jesus is indeed our cornerstone, and God's spirit surely dwells in and through the people of Lyngblomsten!

In Christ,



**Jeffrey Heinecke**

President & CEO



**Kim JoDene Donat**

Board Chair



# FROM BLUEPRINT *to* REALITY

Throughout 2022, the vision for building on our mission in the East Metro went from blueprints to a four-story structure and a community of townhomes in various stages of completion. All 12 months, workers made steady progress in constructing Lyngblomsten's new vibrant senior living community at the corner of Hodgson Road and County Road J in Lino Lakes, Minnesota (a fact evidenced by the photos on this page). Coupled with this, a substantial amount of work took place away from the construction site—developing policies, spreading the word, meeting with prospective residents, preparing for operations, and much, much more—to ensure the campus would be ready to welcome its first residents in 2023.



*These pictures from March 2022 show crews' work installing footings and foundation walls for the main campus building.*



*Workers used a crane to install siding on the main building in September 2022.*



*Taken in December 2022, this photo shows five of the 20 detached rental townhomes that are being constructed on the north end of campus.*



*By year's end, the main building's two-story lobby was taking shape—a space that will welcome residents, visitors, volunteers, and staff to the campus community.*



*Members of the Lyngblomsten Board of Directors who made the final decision for Lyngblomsten to construct a senior living campus in Lino Lakes. Front row (L to R): Debra George, Amy Korzenowski, Elaine Prickel, Kim Donat, Rev. Ivy Huston. Back row (L to R): Michael Santoro, David Christianson, Jeff Heinecke, Rev. Marty Ericson, John Peck, Paulette Olsen, Peter Polga. Not pictured: Rev. Joy Johnson, Dr. Mark Knudson, Gretchen LaBelle, and Trupti Storlie.*

# HIGHLIGHTS *from* 2022



Residents enjoyed the MN State Fair in August—the first time Lyngblomsten had led an outing to the great get-together since the pandemic began.



A volunteer and a participant create handmade cards—and a friendship—during a session of *The Gathering at St. John in the Wilderness* in White Bear Lake.

## RESIDENTIAL SERVICES

- The Lyngblomsten Care Center, Lyngblomsten Apartments, and The Heritage at Lyngblomsten continued to respond to the COVID-19 pandemic. As conditions changed, policies and protocols were adjusted.
- Occupancy remained consistent at the Lyngblomsten Care Center, hovering around 94.4% (up nearly 10% from 2021), thanks in part to a strong, above-industry average staff retention rate of 84.4% for direct caregivers (the Minnesota industry average is 68.5%).
- Residents of senior housing on the Como Park campus welcomed many improvements, including new carpet and installation of Wi-Fi at the Lyngblomsten Apartments, new window blinds at The Heritage at Lyngblomsten, and a new food service model at both buildings that involved shifting operations from an outside vendor to the in-house (Lyngblomsten) food service team.
- Staff in Home Health Services continued to make program modifications in response to Minnesota's 2021 assisted living law. Home Health Services provides personal and home care services (such as medication management and housekeeping) to residents of Lyngblomsten's apartments.
- For Lyngblomsten at Lino Lakes, 2022 was all about construction. Building plans were updated to incorporate even more amenities to enhance residents' active living experience. Marketing efforts continued, and by year-end, 25% of the townhomes and 44% of the independent living apartments had been reserved. The opening of the townhomes was delayed due, in part, to supply chain issues.

## LYNGBLOMSTEN COMMUNITY SERVICES

*Note: Throughout 2022, "2nd Half with Lyngblomsten" and "Lyngblomsten Community Services" were used interchangeably.*

- Lyngblomsten Community Services fully implemented its revised programming model that focuses on four key areas: memory loss enrichment programs, caregiver services, wellness opportunities, and resources to churches.
- A new program called the Memory Collective launched in 2022. This 8-week online enrichment class is for older adults who are living with mild cognitive impairment or are experiencing early skill changes with memory, language, visual perception, or processing. Centered around a theme, weekly sessions feature presentations, discussions, and sharing, with the series culminating with an in-person outing for the final week.
- Development of one-on-one coaching opportunities for older adults and caregivers continued. An additional staff member received certification to be a Caregiver Consultant through the Minnesota Board on Aging, and another received certification to be a PEARLS coach. PEARLS (Program to Encourage Active, Rewarding Lives) provides individual support and resources to older adults experiencing depression or low mood. A room for consultations was furnished on the Como Park campus to make these sessions comfortable and private.





*Volunteers resumed serving popcorn on the Como Park campus on Thursday afternoons after a two-year pandemic hiatus.*

## SUPPORTERS

- More volunteers returned to serving, with time volunteered increasing by nearly 7,000 hours from 3,058 in 2021 to 10,056 in 2022. Staff continue to work on recruiting and onboarding individuals and groups with the goal of reaching pre-pandemic levels of both the number of hours volunteered and number of volunteers.
- Donors contributed \$1.5 million to enrich the lives of older adults, especially through community services, lifelong learning and the arts, spiritual care, the Good Samaritan Fund, and home health services. This included a substantial estate gift from longtime donor and volunteer James “Jim” Nash.
- Longtime supporter Curt Thorpe received the Anna Quale Fergstad Award for Distinguished Service in recognition of his generous gifts of time and treasure to Lyngblomsten and the broader community.
- Husom Park, located near the front entry of the care center, was dedicated in October. The park is named in honor of sisters June, Ruth, and Rachel Husom for their generosity and is dedicated to the thousands of volunteers who have served Lyngblomsten’s mission over the past 11 decades.



*Residents flexed their creative muscles during a writing class held at the apartments, one of many arts and lifelong learning opportunities offered in 2022.*

## OTHER

- In March, eMenuChoice, the senior dining software developed by Lyngblomsten, was sold to a private equity firm. Since its inception in 2013, eMenuChoice went from serving one facility—Lyngblomsten—to serving 277 facilities in 38 states and Canada.
- Lyngblomsten’s Lifelong Learning & the Arts provided many in-person enrichment opportunities for residents and housing tenants. Partners and programs included the MacPhail Center for Music, Northern Clay Center, Art with Heart, Nature-Based Therapeutics with the Minnesota Landscape Arboretum and University of Minnesota Center for Spirituality & Healing, MovementWise with the Cowles Center, MN Opera’s Opera Connections, and Macalester College’s Perspective Collective.
- Due to the extensive amount of planning needed early in the year and the unknowns of how the pandemic might affect campus life in the summer, Lyngblomsten decided not to host the Mid-Summer Festival in 2022.
- With a desire to increase representation of churches near the new Lino Lakes campus, the Board of Directors lifted the moratorium on adding new churches. The organization welcomed Living Waters Lutheran Church of Lino Lakes as a member congregation, Lyngblomsten’s first new member since 2007.

# LYNGBLOMSTEN CORPORATE

## FINANCIALS

January–December 2022

## PEOPLE SERVED

January–December 2022

**689 persons**

Lyngblomsten  
Community Services  
(2nd Half with Lyngblomsten)

**154 persons**

Home Health Services

**664 persons**

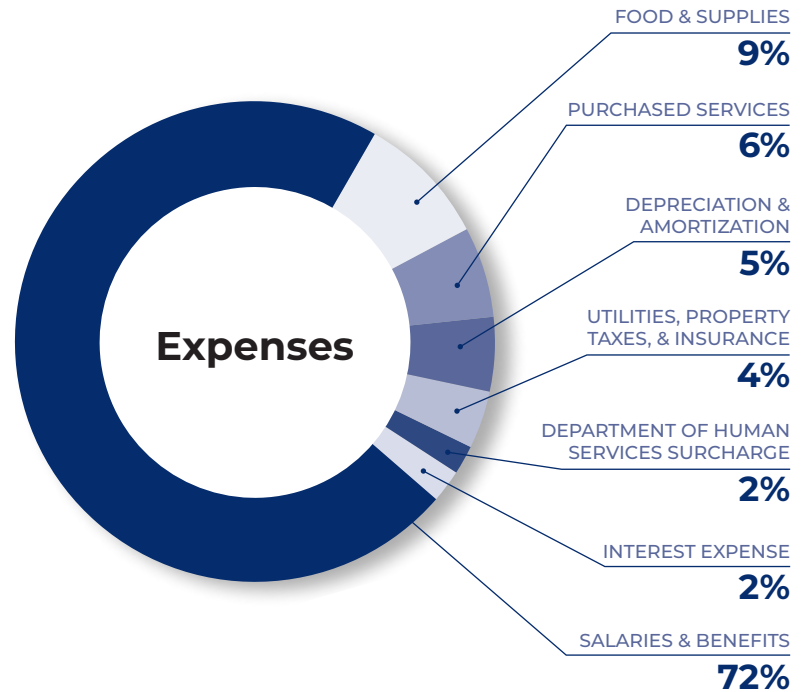
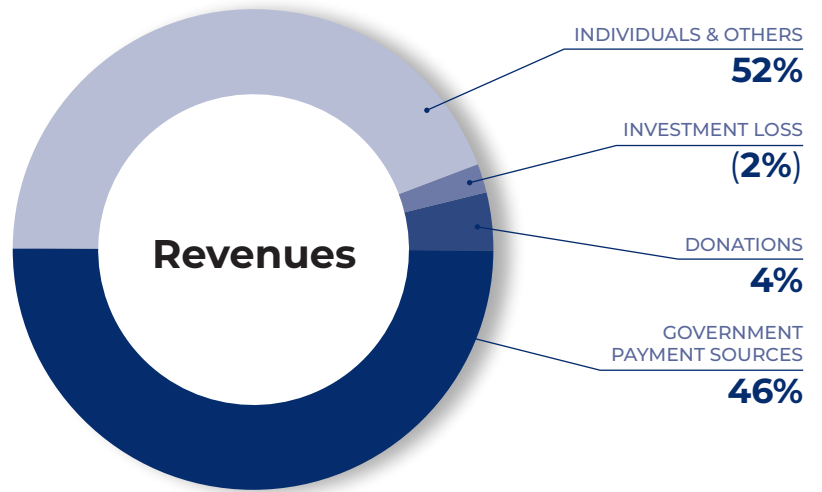
Lyngblomsten Care Center

**130 persons**

Lyngblomsten Apartments

**71 persons**

The Heritage at Lyngblomsten



# COMMUNITY INVOLVEMENT

## FUNDRAISING STATISTICS

January–December 2022

**\$1,502,986**

Total Gifts Received

**654**

Total # of Donors

**1,253**

Total # of Gifts

## MEMBERSHIPS

Heritage Society

**26 Households**

*Persons who have chosen to help ensure the future capacity of Lyngblomsten by providing financial support through a charitable gift annuity, naming Lyngblomsten in their will or life insurance beneficiary, or establishing an endowment of \$10,000 or more.*

President's Club

**65 Households**

*Annual membership granted to donors giving \$1,000 or more during the fundraising year.*

## VOLUNTEER & CORPORATE ENGAGEMENT STATISTICS

January–December 2022

**10,056**

Total # of Hours Volunteered

**357**

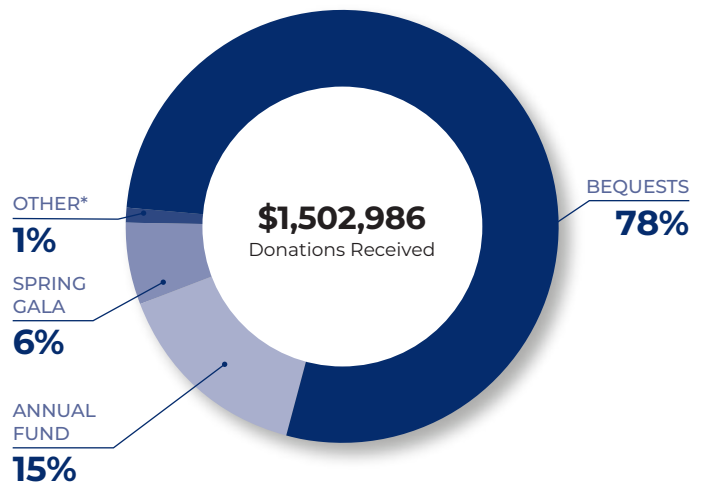
Total # of Registered Volunteers

**31**

# of Corporate Sponsors

## SOURCES OF DONATIONS

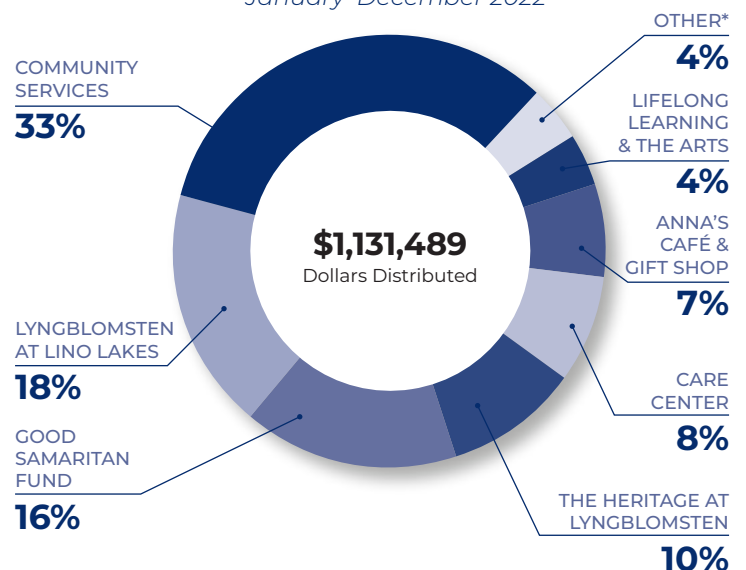
January–December 2022



\*Tribute gifts, grants, and capital campaign pledge payments

## LYNGBLOMSTEN FOUNDATION DISTRIBUTION TO LYNGBLOMSTEN PROGRAMS

January–December 2022



\*Lyngblomsten Apartments, Spiritual Care, Employee Scholarships, and Annuity Interest



## LYNGBLOMSTEN'S MEMBER CONGREGATIONS

The year indicates when the church became a member.

**Amazing Grace Lutheran**  
*Inver Grove Heights, 2007*

**Augustana Lutheran**  
*West St. Paul, 2002*

**Bethlehem Lutheran in the Midway**  
*St. Paul, 1962*

**Centennial United Methodist**  
*Roseville, 2000*

**Christ on Capitol Hill**  
*St. Paul, 1961*

**Community of Grace Lutheran**  
*White Bear Lake, 1998*

**Como Park Lutheran**  
*St. Paul, 1960*

**Falcon Heights United Church of Christ**  
*Falcon Heights, 1999*

**Gloria Dei Lutheran**  
*St. Paul, 1985*

**Gustavus Adolphus Lutheran**  
*St. Paul, 1988*

**Holy Childhood Catholic**  
*St. Paul, 1991*

**Immanuel Lutheran**  
*St. Paul, 1960*

**Incarnation Lutheran**  
*Shoreview, 1990*

**Jehovah Lutheran**  
*St. Paul, 1995*

**Lakeview Lutheran**  
*St. Paul, 1960*

**Living Waters Lutheran**  
*Lino Lakes, 2022*

**Lutheran Church of the Redeemer**  
*St. Paul, 1998*

**North Heights Lutheran**  
*Roseville/Arden Hills, 1975*

**Prince of Peace Lutheran**  
*Roseville, 1961*

**Redeemer Lutheran**  
*White Bear Lake, 1960*

**Roseville Lutheran**  
*Roseville, 1975*

**St. Andrew's Lutheran**  
*Mahtomedi, 1991*

**St. Anthony Park Lutheran**  
*St. Paul, 1960*

**St. Mark Lutheran**  
*St. Paul, 1962*

**St. Timothy Lutheran**  
*St. Paul, 1961*

**Salem Lutheran**  
*West St. Paul, 1965*

## OUR MISSION

Influenced by Christ, Lyngblomsten provides a ministry of compassionate care and innovative services to older adults in order to preserve and enhance their quality of life.

## OUR GUIDING PRINCIPLES

For our **participants**, Lyngblomsten promotes dignity through informed choices for living options, respecting individuality, and orchestrating the best life possible.

For our participants' **families**, Lyngblomsten supports their needs through careful listening, traveling alongside them as they walk the journey with their loved ones.

For our **employees**, Lyngblomsten strives to foster an environment that encourages compassionate caregiving, innovative thinking, problem-solving, and opportunity seeking.

Through our **community** of donors, volunteers, corporate congregations, and socially responsible corporations, Lyngblomsten encourages the individual to live one's personal ministry by enhancing the lives of older adults.

## LYNGBLOMSTEN BOARD OF DIRECTORS

2022–2023

Kim Donat – *Chair*

Debra George – *Vice Chair*

Dr. Mark Knudson – *Treasurer*

Rev. Marty Ericson – *Secretary*

Jeff Heinecke – *President & CEO*

Rev. Ivy Huston

Amy Korzenowski

Dr. Michael Lovett

Paulette Olsen

Peter Polga

Diana Rockstad

## OUR PILLARS

Influenced by Christ

Innovation & Leadership

Resources & Support

Person-Centered & Dignity-

Enhancing Experiences

Engaged Lifestyle (Author Your Life)

