

STRENGTHENED



CORPORATE ANNUAL SUMMARY

For the year ended December 31, 2020

STRENGTHENED

**Be strong and bold; have no fear or dread of them,
because it is the Lord your God who goes with you;
he will not fail you or forsake you.**

–Deuteronomy 31:6

Dear Friends of Lyngblomsten,

The women who founded Lyngblomsten 115 years ago might never have imagined all that their work would survive and grow into. Lyngblomsten has endured this nation's depressions, recessions, wars, and expansions, showing resiliency and resolve at every stage. Blessed by strong leaders, a committed work force, and the support of church and local communities, Lyngblomsten has become a center for innovation and creativity, helping people to age with dignity, comfort, and purpose.

Congregate living facilities and care centers were hit especially hard this past year with sickness, mortality, and financial issues. The response of Lyngblomsten's staff in the face of this pandemic has been nothing less than heroic. We owe them a debt of gratitude for their amazing work and commitment to the mission. With high numbers of staff and residents now vaccinated, we believe we have weathered the worst of this pandemic.

On other fronts, remodeling of the care center was completed in the fall with lovely new spaces inside and out. We resumed work on our second campus in Lino Lakes. The initial financing for this project is coming together, and we anticipate groundbreaking later this year.

And just as we have seen new creativity and adaptation in providing residential services during the pandemic, Lyngblomsten has also shown innovation, creativity, and resilience in its community outreach programming for older adults and informal caregivers in the east metro. eRespite care is a program with great potential developed in response to the pandemic and our desire to continue supporting at-home caregivers and their loved ones living with memory loss. Online offerings continue to bring many community elders together for learning, connection, and mutual support.

Finally, as Lyngblomsten moves into a new future, it finds conversations and efforts repeatedly turning to questions of diversity. How can we attract, train, and retain the best, brightest, most diverse frontline staff, administrative staff, and board and committee members possible? How do we better reflect the diverse community around us? These conversations are essential for bolstering all of our core ministries.

2020 presented us with unprecedented challenges. It was met with amazing responsiveness and resolve. We are forever strengthened by the experience. 2021 begins with hope and optimism and continuing resolve. Thank you to all who continue to make Lyngblomsten a special, incredible organization.

In Christ,



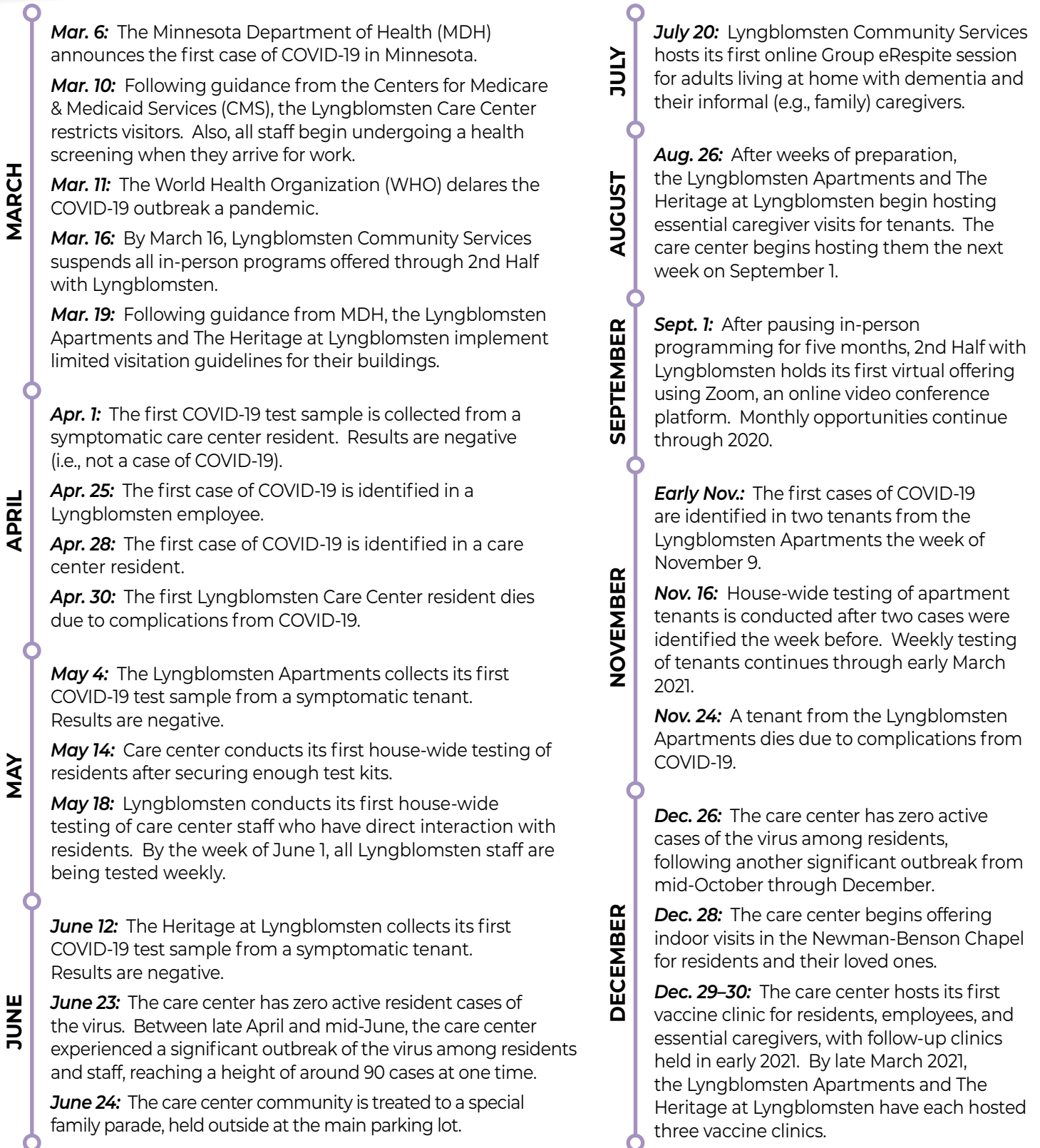
Pastor Martin Ericson *Board Chair*



Jeffrey Heinecke *President & CEO*

COVID-19 TIMELINE

A SUMMARY FROM 2020



2020 HIGHLIGHTS

Residential Services

- In response to the pandemic, the Lyngblomsten Care Center, the Lyngblomsten Apartments, and The Heritage at Lyngblomsten implemented limited visitation guidelines in accord with guidance from federal and state health agencies. As COVID-19 evolved, campus policies related to visitation, testing, communications, and activities adjusted multiple times as agencies issued new guidance.
- With families, friends, and volunteers not able to visit in-person, staff took on new responsibilities to cover those roles—such as delivering packages, assisting at mealtimes, and leading conversation groups.
- After much preparation, Lyngblomsten became a participating organization in two Institutional Special Needs Plans, or I-SNPs, offered by Medica and UCare. Each I-SNP provides health insurance for coordinated medical care to those needing nursing services on our campus.
- The Lyngblomsten Care Center completed its three-year, \$10 million renovation that brought major modifications to resident rooms, bathrooms, and shared living spaces—both indoor and outdoor.



Sampling of remodeled care center areas



A session of our online Group eRespite program

Community Services

NOTE: "2nd Half with Lyngblomsten" and "Lyngblomsten Community Services" are used interchangeably.

- 2nd Half with Lyngblomsten in-person programs (including The Gathering) were suspended in mid-March due to the pandemic. In response, Lyngblomsten Community Services staff shifted to providing support to participants remotely (i.e., over the phone and via email).
- In July, Lyngblomsten Community Services launched an online Group eRespite program for adults experiencing early- to mid-stage memory loss and their informal (e.g., family) caregivers. The program provides participants with one hour of engaging activities and a much-needed break for their caregivers.
- Two sessions of Giving Care to YOU!, a video education and support series for informal caregivers, were held virtually in the fall. The series provided caregivers with new strategies for implementing self-care practices.
- After a five-month hiatus, 2nd Half with Lyngblomsten began hosting social and educational opportunities in September virtually using Zoom (an online video conference platform). The quarterly print catalog was converted to a monthly electronic bulletin.
- Lyngblomsten Community Services completed its three-year funding grant to develop the Care Ministry Network, an online training platform for church volunteers in caring ministries.

Community Involvement

- Due to COVID-19 visitor restrictions, only 7,143 volunteer hours were logged in 2020—a decrease from 32,584 hours in 2019. Still, more than 550 volunteers (ongoing and one-time) served in the first quarter of 2020, as did a handful who assisted in the summer with hosting outdoor visits for care center residents.
- The Lyngblomsten Foundation held its first-ever virtual Spring Gala fundraiser on April 24, surpassing its fundraising goal by \$6,000. More than 100 households tuned in to learn how their generosity supports older adults in the community through 2nd Half with Lyngblomsten.
- Dr. Maynard and Elaine Jacobson were presented with the Anna Quale Fergstad Award for Distinguished Service in recognition of their generous sharing of time and treasure with Lyngblomsten. The award was presented during the President's Virtual Social Hour (a change from hosting the in-person President's Dinner).
- Collaboration began between the Lyngblomsten Foundation and Lyngblomsten Community Services to create a sustainability plan for 2nd Half with Lyngblomsten. The process includes studying program costs and funding streams, with the goal of serving more people, smoothing out the peaks and valleys of fundraising, and building capacity to fund new initiatives.
- The Lyngblomsten Foundation wrapped up the Our Turn in History capital campaign, raising more than \$1 million for care center renovations.



Left: Dr. Maynard and Elaine Jacobson



Right: Volunteers visit with Lyngblomsten Apartments tenants in January 2020



Top: Medical Director Dr. Eric Anderson receives his first vaccine dose at the care center's December clinic

Bottom: Care Center Family Parade on June 24

Other

- Lyngblomsten's Lifelong Learning & the Arts department collaborated with staff and community arts organizations to provide a variety of pandemic-modified activities for residents, tenants, and community participants. Activities included individual art projects, weekly podcasts with the Minnesota Opera, and a virtual cabaret performance featuring housing tenants.
- Due to the COVID-19 pandemic, the annual Mid-Summer Festival scheduled for July 31 was cancelled—the first time in more than 100 years.
- In response to senior living communities needing to limit the number of persons gathered together, eMenuCHOICE® developed and launched a reservations feature that allows communities to assign capacity limits to dining rooms and take meal reservations.
- After hosting two information sessions in February 2020 for a proposed continuum-of-care senior living campus in Lino Lakes, Lyngblomsten cancelled additional sessions due to the pandemic and paused the building project till early 2021.

LYNGBLOMSTEN CORPORATE

Financials

January–December 2020

People Served

January–December 2020

622 persons

Community Services
(2nd Half with Lyngblomsten)

135 persons

Home Health Services

537 persons

Lyngblomsten Care Center

114 persons

Lyngblomsten Apartments

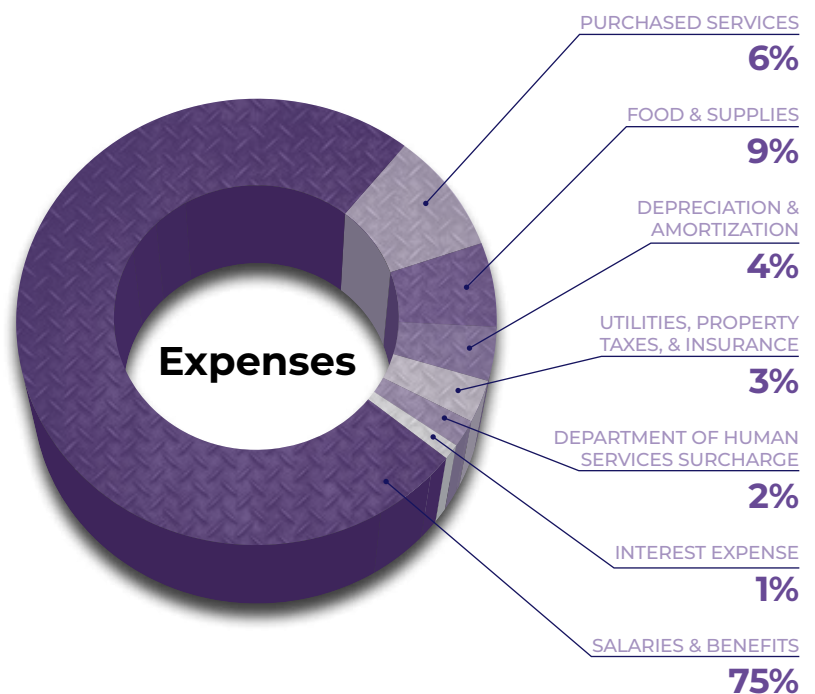
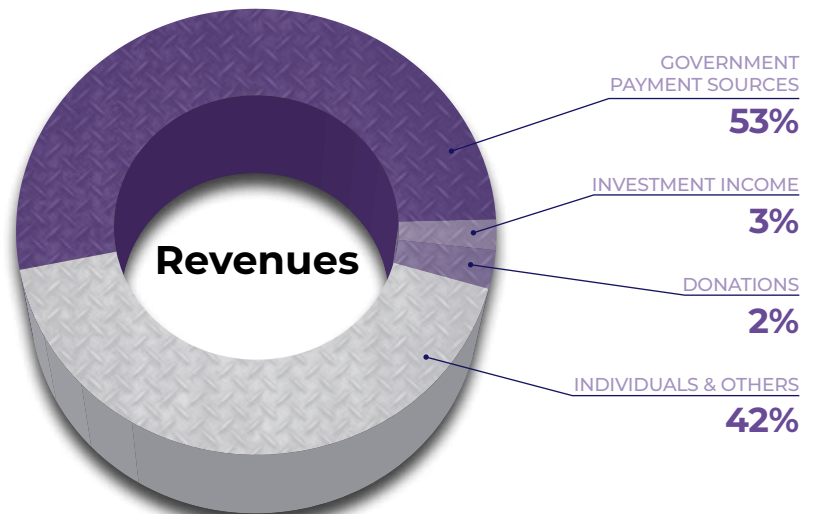
70 persons

The Heritage at Lyngblomsten

50,585 persons

eMenuCHOICE®

Note: Number of people served is less than a typical year due to COVID-19 restrictions.



Note: Lyngblomsten received funds from the federal CARES Act of 2020.

COMMUNITY INVOLVEMENT

Fundraising Statistics

January–December 2020

\$685,825

Total Gifts Received

704

Total # of Donors

1,422

Total # of Gifts

Memberships

Heritage Society

42 Households

Persons who have chosen to help ensure the future capacity of Lyngblomsten by providing financial support through a charitable gift annuity, naming Lyngblomsten in their will or life insurance beneficiary, or establishing an endowment of \$10,000 or more.

President's Club

63 Households

Annual membership granted to donors giving \$1,000 or more during the fundraising year.

Volunteer & Corporate Engagement Statistics

January–December 2020

557*

Total # of Volunteers

Includes 475 ongoing volunteers and 82 one-time volunteers

7,143*

Total # of Hours Volunteered

2

of \$1,000

Youth Volunteer Scholarships Awarded

28

of Corporate Sponsors

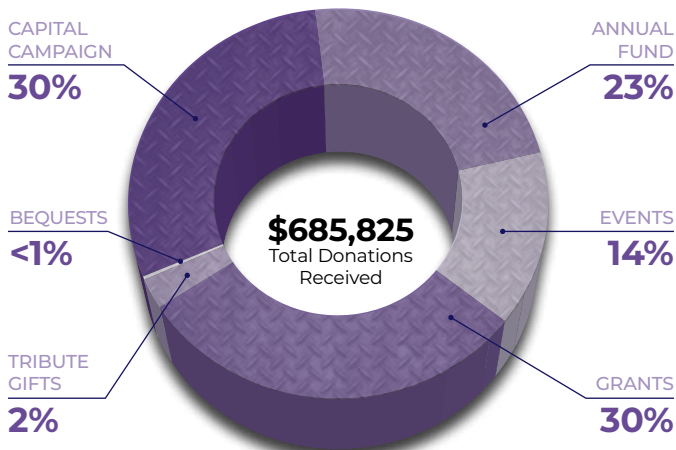
1*
of Volunteer Groups

Includes corporate, civic, church, and school volunteers

*Note: Volunteerism in 2020 was substantially lower than typical due to COVID-19 restrictions.

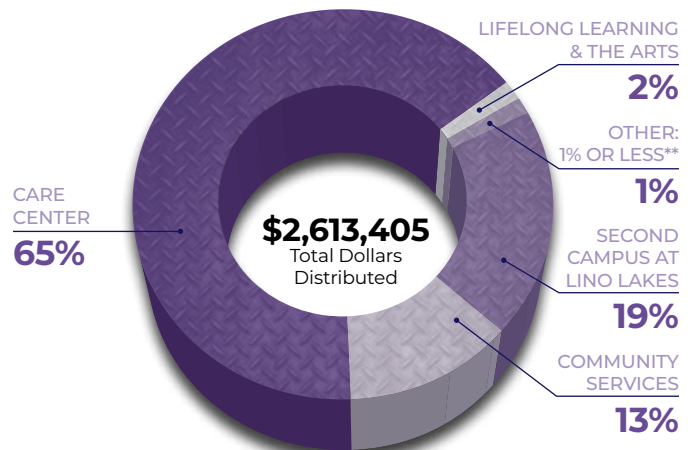
Sources of Donations

January–December 2020



Lyngblomsten Foundation Distribution to Lyngblomsten Programs

January–December 2020



**Spiritual Care, Lyngblomsten Apartments, Good Samaritan Fund, and Annuity Interest

Lyngblomsten's Member Congregations

The year indicates when the church became a member.

Amazing Grace Lutheran
Inver Grove Heights, 2007

Augustana Lutheran
West St. Paul, 2002

**Bethlehem Lutheran in the
Midway**
St. Paul, 1962

Centennial United Methodist
Roseville, 2000

Christ on Capitol Hill
St. Paul, 1961

**Community of Grace
Lutheran**
White Bear Lake, 1998

Como Park Lutheran
St. Paul, 1960

**Falcon Heights United Church
of Christ**
Falcon Heights, 1999

Gloria Dei Lutheran
St. Paul, 1985

Gustavus Adolphus Lutheran
St. Paul, 1988

Holy Childhood Catholic
St. Paul, 1991

Immanuel Lutheran
St. Paul, 1960

Incarnation Lutheran
Shoreview, 1990

Jehovah Lutheran
St. Paul, 1995

Lakeview Lutheran
St. Paul, 1960

**Lutheran Church of the
Redeemer**
St. Paul, 1998

North Heights Lutheran
Roseville/Arden Hills, 1975

Prince of Peace Lutheran
Roseville, 1961

Redeemer Lutheran
White Bear Lake, 1960

Roseville Lutheran
Roseville, 1975

St. Andrew's Lutheran
Mahtomedi, 1991

St. Anthony Park Lutheran
St. Paul, 1960

St. Mark Lutheran
St. Paul, 1962

St. Timothy Lutheran
St. Paul, 1961

Salem Lutheran
West St. Paul, 1965

Our Mission

Influenced by Christ, Lyngblomsten provides a ministry of compassionate care and innovative services to older adults in order to preserve and enhance their quality of life.

Our Guiding Principles

For our **participants**, Lyngblomsten promotes dignity through informed choices for living options, respecting individuality, and orchestrating the best life possible.

For our participants' **families**, Lyngblomsten supports their needs through careful listening, traveling alongside them as they walk the journey with their loved ones.

For our **employees**, Lyngblomsten strives to foster an environment that encourages compassionate caregiving, innovative thinking, problem-solving, and opportunity seeking.

Through our **community** of donors, volunteers, corporate congregations, and socially responsible corporations, Lyngblomsten encourages the individual to live one's personal ministry by enhancing the lives of older adults.

Lyngblomsten Board of Directors

2020-2021

**Rev. Marty
Ericson**
Chair

**Kim
Donat**
Vice Chair

**David
Christianson**
Treasurer

**Rev. Joy
Johnson**
Secretary

Deb George

Gretchen LaBelle

Elaine Prickel

Jeff Heinecke

John Peck

Mike Santoro

Pete Keely

Peter Polga

Trupti Storlie

Our Pillars

Influenced by Christ

Innovation & Leadership

Resources & Support

Person-Centered & Dignity-
Enhancing Experiences

Engaged Lifestyle (Author Your Life)



1415 Almond Avenue | St. Paul, MN 55108 | (651) 646-2941 | www.lyngblomsten.org